


# VARAVELA



WEDDING  
PACKAGE

“varavela means  
the special occasion  
in your lifetime.”

“we do not remember days,  
we remember moments.”



“VARAVELA”  
was assembled from two Thai words.

VARA means special occasion,  
VELA means time,

therefore “VARAVELA“  
means the special occasion  
in your lifetime.



"we do not remember days,  
we remember moments."



"the best pet-friendly venue."





"after party vibes"

# VARAVELA GARDEN HALL

## SPACE

“VARAVELA” garden hall was designed to give you the supreme private experiences. It is the unique architectural design that is embraced with trees and sceneries. The original design idea was inspired by the unique design languages in different eras. It is the unique property design that has both indoor-outdoor experiences with comprehensive functions with the perfect location in Bangkok, Thailand.



FLOOR PLAN	DIMENSION	HEIGHT	MAX CAPACITY			
	[ m ]	[ m ]	theater	long table	cocktail	round table
Valavela Chamber	18 x 9	5.70	200	150	200	100
The Signature Lounge	9 x 4.5	2.58	40	20	30	20
The Arches' Lawn	14 x 6	-	150	60	70	60
Hallway Garden	25.5 x 6	-	80	-	-	-
The Overture	7.5 x 9	3.30	50	20	50	20
The Duet Patio	14 x 6	-	150	100	100	60
The Home Bar Dining	18 x 6.5	2.80 , 3.20	50	30	70	40

Car Parking : 175 cars

Maximun Guest : 350 persons

# VARAVELA

## FUNCTIONS

### VARAVELA CHAMBER



Our main hall with a high ceiling. This is the special design that is perfect for all banquet and reception functions. It is also connected to our outdoors spaces perfectly.

### THE SIGNATURE LOUNGE



This is the multi-function room with showering room built in. This could turn into a family rest room, conducting the nuptial bed ceremony or even make extra private seats for VIP guest during the event.

### THE ARCHES' LAWN



The outdoor lawn that is connected to the main hall. This also serves as another outdoor open space to perform many functions, such as, extra table set, Food & Beverage Station and more.

### HALLWAY GARDEN



The main welcome space that is surrounded by high Banyan tree wall and Silky Oak trees. The perfect space to set up outdoor activity to start the ceremony / event.

### THE OVERTURE



The cozy and classy welcome room that is connected to the green lawn. It is the perfect room to host any cozy opening scene.

### THE DUET PATIO



Our signature great grand lawn that creates the enclosed space, yet perfectly connected with both the entrance and the main hall. To create the perfect outdoor court yard experiences.

### THE HOME BAR DINING



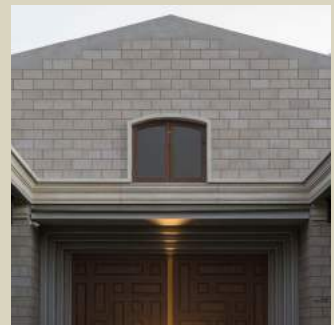
'Trattoria' experience in the Garden Hall. It is the perfect place to host special dinner experiences with your closed ones. The whole space is connected to the bar, the dining room and the terrace all together. It is also a perfect set up for buffet line during event function as well.

### DRESSING ROOM



The dressing room that has both dressing table and all-around- glass room. It creates the perfect reflection about your truly beauty.

### THE MEZZANINE ROOM



Our hidden mezzanine room is located on the 2nd floor. This is the signature space that is both connected to the Duet Patio and Varavela Chamber

# THE VENUE

## PACKAGE A

“The venue package is designed for those who want to co-create your special day.  
We provide the space with fundamental services for you to host your event”

150,000.-

Space : All Area  
Duration : 06.00 – 13.30 / 18.00 – 22.00 Hrs



### Venue Facilities & Amenities

- Strip Light / Fabric Shade Hanging at Duet Patio
- 200 Units of Chiavari Chair & 20 Units of High Stool tables
- Standard Sound System & 4 Microphones
- 10 Units of Tripod Gallery
- Tea Set



### Ceremonial Organizer Services

- Thai Elderly Respecting Ceremony / Chinese Tea Ceremony ( พิธีรับไหว้ / พิธียกน้ำชา )
- Counting the Dowry / The Engagement ( พิธีชั่งของ / พิธีนับสินสอด / พิธีสวมแหวนหมั้น )
- Accepting The Bride Ceremony ( พิธีรับตัวเจ้าสาว )
- The Bride Opening Ceremony ( พิธีเปิดตัวเจ้าสาว )
- Confetti ( กระดาษโปสเตอร์ สำหรับใช้โปรยทางงานแต่ง )



# THE FINEST

## PACKAGE B

“The Finest package is designed for those who seek easy luxury. It is the modest design that mixed between convenient ceremony experiences and very-fine decoration”

220,000.-

Space : All Area

Duration : 06.00 – 13.30 / 18.00 – 22.00 Hrs



### Venue Facilities & Amenities

- The Venue Facilities & Amenities



### Ceremonial Organizer Services

- Khan Maak Ceremony ( พิธีตั้งขบวนแห่ขันหมากและพิธีกินประตู )
- Morning Ceremony Master of Ceremony ( นายพิธีกรงานเช้า )
- Thai Elderly Respecting Ceremony / Chinese Tea Ceremony ( พิธีรับไหว้ / พิธียกน้ำชา )
- Counting the Dowry / The Engagement ( พิธีสู้อวด / พิธีนับสินสอด / พิธีสวมแหวนหมั้น )
- Accepting The Bride Ceremony ( พิธีรับตัวเจ้าสาว )
- The Bride Opening Ceremony ( พิธีเปิดตัวเจ้าสาว )
- Notebook for Well-Wishers ( สมุดอวยพร )



### The Finest Decoration

- Confetti
- Corsages
- Bridal Bouquet
- Reception Table Set
- Photo Backdrop with Logo
- Stage Backdrop with Logo
- Bride & Groom Welcome Signage 1 Unit
- Flower Decoration on Dining Table 4 Unit
- Decoration for Cake Table / Champagne Tower 1 Set



Photo Backdrop



Photo Backdrop



Stage Backdrop



Champagne Tower

Prices are subject to 7% VAT

# THE TOTAL LOOK

## PACKAGE C

“The Total Look package is designed for those who wants to have VARAVELA decoration style with a full service of organizer.”

290,000.-

Space : All Area

Duration : 06.00 – 13.30 / 18.00 – 22.00 Hrs

✓

✓

### Venue Facilities & Amenities

- The Venue Facilities & Amenities

✓

### Ceremonial Organizer Services

- Monk Ceremony ( พิธีสงฆ์ )
- Khan Maak Ceremony ( พิธีตั้งขบวนแห่ขันหมากและพิธีกินประตู )
- Morning Ceremony Master of Ceremony ( นายพิธีกรงานเช้า )
- Thai Elderly Respecting Ceremony / Chinese Tea Ceremony ( พิธีรับไหว้ / พิธียกน้ำชา )
- Counting the Dowry / The Engagement ( พิธีสู่ออ / พิธีนับสินสอด / พิธีสวมแหวนหมั้น )
- Accepting The Bride Ceremony ( พิธีรับตัวเจ้าสาว )
- The Bride Opening Ceremony ( พิธีเปิดตัวเจ้าสาว )
- Wedding Reception Master of Ceremony ( พิธีกรงานเลี้ยง )
- Notebook for Well-Wishers ( สมุดอวยพร )
- Run Que Team ( ทีมรับคิว )

✓

✓

✓

✓

✓

✓

✓

✓

✓

✓

✓

### The Total Look Decoration

- Confetti
- Corsages
- Bridal Bouquet
- Reception Table Set
- Photo Backdrop with Logo ( Hanging / Structure / Flower Bush )
- Stage Backdrop with Logo ( Hanging / Structure / Flower Bush )
- Bride & Groom Welcome Signage 1 Unit
- Flower Decoration on Dining Table 8 Unit
- Decoration for Cake Table / Champagne Tower 1 Set

✓

✓

✓

✓

✓

✓

✓

✓

✓

✓



Welcome Signage



Table Decoration



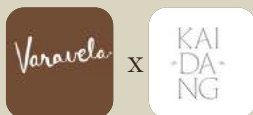
Decoration for Cake Table



Champagne Tower

# THE ELEGANCE

## PACKAGE D



The Elegance is the collaboration between KAI-DANG Design and VARAVELA.  
It is the signature collaboration with a touch of Kaidang signature flower arrangement style.

340,000.-

Space : All Area

Duration : 06.00 – 13.30 / 18.00 – 22.00 Hrs



### Venue Facilities & Amenities

- The Venue Facilities & Amenities



### Ceremonial Organizer Services

- Monk Ceremony ( พิธสงฆ์ )
- Khan Maak Ceremony ( พิธีตั้งขบวนแห่ขันหมากและพิธีกินประทู )
- Morning Ceremony Master of Ceremony ( นายพิธีกรงานเช้า )
- Thai Elderly Respecting Ceremony / Chinese Tea Ceremony ( พิธีรับไหว้ / พิธียกน้ำชา )
- Counting the Dowry / The Engagement ( พิธีสู้อบ / พิธีนับสินสอด / พิธีสวมแหวนหมั้น )
- Accepting The Bride Ceremony ( พิธีรับตัวเจ้าสาว )
- The Bride Opening Ceremony ( พิธีเปิดตัวเจ้าสาว )
- Wedding Reception Master of Ceremony ( พิธีกรงานเลี้ยง )
- Notebook for Well-Wishers ( สมุดอวยพร )
- Run Que Team ( ทีมรับคิว )



### The Elegance Decoration

- Confetti
- Corsages
- Bridal Bouquet
- Reception Table Set
- Photo Backdrop with Logo ( Hanging / Structure / Flower Bush )
- Stage Backdrop with Logo ( Hanging / Structure / Flower Bush )
- Bride & Groom Welcome Signage 1 Unit
- Flower Decoration on Dining Table 8 Unit
- Decoration for Cake Table / Champagne Tower 1 Set



Stage Backdrop with Logo



Bridal Bouquet



Welcome Signage



Decoration for Cake Table



Backdrop with Logo

# THE PRESTIGE

## PACKAGE E



“The Elegance is the collaboration between Kaidang Design and VARAVELA. It is the most prestige wedding experiences that gives the full service of great decoration and service provided.”

420,000.-

Space : All Area

Duration : 06.00 – 13.30 / 18.00 – 22.00 Hrs



### Venue Facilities & Amenities

- The Venue Facilities & Amenities



### Ceremonial Organizer Services

- Monk Ceremony ( พิธีสงฆ์ )
- Khan Maak Ceremony ( พิธีตั้งขบวนแห่ขันหมากและพิธีกินประตู )
- Morning Ceremony Master of Ceremony ( นายพิธีกรงานเช้า )
- Thai Elderly Respecting Ceremony / Chinese Tea Ceremony ( พิธีรับไหว้ / พิธียกน้ำชา )
- Counting the Dowry / The Engagement ( พิธีสู้อบ / พิธีนับสินสอด / พิธีสวมแหวนหมั้น )
- Accepting The Bride Ceremony ( พิธีรับตัวเจ้าสาว )
- The Bride Opening Ceremony ( พิธีเปิดตัวเจ้าสาว )
- Wedding Reception Master of Ceremony ( พิธีกรงานเลี้ยง )
- Notebook for Well-Wishers ( สมุดถวายพร )
- Run Que Team ( ทีมรับคิว )



### The Prestige Decoration

- Gallery
- Confetti
- Corsages
- Bridal Bouquet
- Reception Table Set
- Photo Backdrop with Logo ( Hanging / Structure / Flower Bush )
- Stage Backdrop with Logo ( Hanging / Structure / Flower Bush )
- Bride & Groom Welcome Signage 1 Unit
- Flower Decoration on Dining Table 8 Unit
- Decoration for Cake Table / Champagne Tower 1 Set



Stage Backdrop with Logo



Bridal Bouquet



Welcome Signage



Backdrop with Logo



Champagne Tower

#### EXTRA DECORATION

Minimum: Cake Table 10,000 THB, Gallery 30,000 THB, Special Flower Color 15,000 THB, Hanging Flower 40,000 THB, Entrance 20,000 THB, Walkway 20,000 THB

Prices are subject to 7% VAT

# PACKAGE SUMMARY

PACKAGE		A	B	C	D	E
CODE	DETAILS	THE VENUE	THE FINEST	THE TOTAL LOOK	THE PRESTIGE	THE ELEGANCE
		150,000	220,000	290,000	340,000	420,000
A	<b>TIME USAGE</b> <ul style="list-style-type: none"> <li>Space : All Area</li> <li>Duration : 06.00 - 13.30 / 18.00 - 22.00 Hrs</li> </ul>	✓	✓	✓	✓	✓
B	<b>VENUE FACILITIES &amp; AMENITIES</b> <ul style="list-style-type: none"> <li>Strip Light / Fabric Shade Hanging at Duet Patio</li> <li>200 Units of Chiavari Chair &amp; 20 Units of High Stool tables</li> <li>Standard Sound System &amp; 4 Microphones</li> <li>10 Units of Tripod Gallery</li> <li>Tea Set</li> </ul>	✓	✓	✓	✓	✓
C	<b>CEREMONIAL ORGANIZER SERVICES</b> <ul style="list-style-type: none"> <li>Thai Elderly Respecting Ceremony ( พิธีรับไหว้ )</li> <li>Chinese Tea Ceremony ( พิธียกน้ำชา )</li> <li>Counting the Dowry ( พิธีสู้ออ/พิธีนับสินสอด/พิธีสวมแหวนหมั้น )</li> <li>Accepting The Bride Ceremony ( พิธีรับตัวเจ้าสาว )</li> <li>The Bride Opening Ceremony ( พิธีเปิดตัวเจ้าสาว )</li> <li>Morning Ceremony Master of Ceremony ( นายพิธีกรงานเช้า )</li> <li>Khan Maak Ceremony ( พิธีตั้งขบวนแห่ขันหมากและพิธีกั้นประตู )</li> <li>Notebook for Well-Wishers ( สมุดอวยพร )</li> <li>Run Que Team ( ทีมรับคิว )</li> <li>Monk Ceremony ( พิธีสงฆ์ )</li> <li>Wedding Reception Master of Ceremony ( พิธีกรงานเลี้ยง )</li> </ul>	✓	✓	✓	✓	✓
D	<b>DECORATION</b> <ul style="list-style-type: none"> <li>Gallery</li> <li>Confetti</li> <li>Corsages</li> <li>Bridal Bouquet</li> <li>Reception Table Set</li> <li>Photo Backdrop with Logo</li> <li>Stage Backdrop with Logo</li> <li>Bride &amp; Groom Welcome Signage 1 Unit</li> <li>Decoration for Cake Table / Champagne Tower 1 Set</li> <li>Flower Decoration on Dining Table</li> </ul>		✓	✓	✓	✓
			4 Unit	8 Unit	8 Unit	10 Unit

# SPECIAL SERVICES

“To add the full flavor to your wedding, we also provide an additional services to fulfill your special days.”

9 Phan Khan Maak	28,500 per / set
Extra Hour	15,000 per / hr
After Party at The Home Bar	30,000 per / hr
Beer Gallery	25,000 per / set
Run Queue Team	25,000 per / set
MC	15,000 / que
Decoration for Donut Tower + Donut Tower 1 Set	8,900 per / set
Holy Water Pouring Set (Start from 15,000 per / set)	15,000 per / set
Food for Monk Ceremony (Start from 9,500 / 9 monks)	9,500 / 9 monks
Bring in non-VARAVELA partner outsource Floral Decoration	50,000 baht



*Phan Khan Mak*



*After Party at Varavela*



*After Party at The Home Bar*



*Wine Cart*



*Holy Water Pouring Set*



*Food for Monk Ceremony*



*Donut Tower*



*Beer Gallery*

# FOOD & BEVERAGE

THIS PRICE EXCLUDES VAT 7 %

## MORNING BREAK

Breakfast Bar (Minimum 50 Pax)

PRICE (THB)

500 / Person

## BUFFET

Thai Buffet A (8 Items)

PRICE (THB)

950 / Person

Thai Buffet B (10 Items)

1,100 / Person

International Buffet A (8 Items)

1,100 / Person

International Buffet A (10 Items)

1,200 / Person

## COCKTAIL

Cocktail A (9 Items)

PRICE (THB)

950 / Person

Cocktail B (13 Items)

1,100 / Person

## CHINESE SET

Chinese Set Superior

PRICE (THB)

15,500 / 10 Persons

Chinese Set Deluxe

20,000 / 10 Persons

## INDIVIDUAL SERVE

Thai Set 3 Courses

PRICE (THB)

1,500 / Person

Thai Set 4 Courses

1,800 / Person

Western Set 3 Courses

1,500 / Person

Western Set 4 Courses

1,800 / Person

## ALCOHOL BEVERAGE

Wedding Wine

PRICE (THB)

Start from 950 / Bottle

Draught Beer

Start from 6,500 / Barrel

Mixer for Whisky Free Flow

200 / Person

## BRING IN CHARGE

Corkage Charge (Wine)

PRICE (THB)

550 / Bottle

Bring in Draught Beer

3,500 / Barrel

Bring in Food Station

15,000 / Station



*Morning Break*



*Individual Serve Thai Set*



*Cocktail*



*Individual Serve Western Set*

# VARAVELA GARDEN HALL

ABOUT PLACE ABOUT TIME

-  @VARAVELA
-  VARAVELA
-  VARAVELA\_OFFICIAL
-  HELLO@VARAVELA.COM
-  VARAVELA GARDEN HALL
-  02-946-6626 , 097-271-3888
-  WWW.VARAVELA.COM

*Varavela*



GOOGLE MAP